

DESIGN WORKSHOP

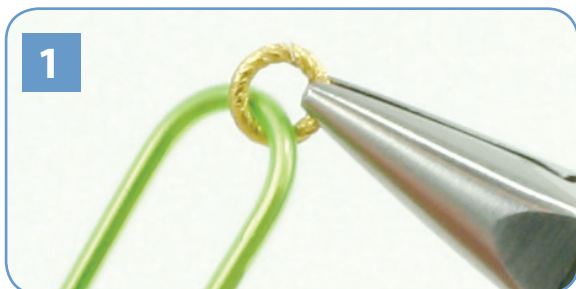
SPIRAL & WEAVE PATTERNED JUMP RINGS NECKLACE

By: Lauren Andersen

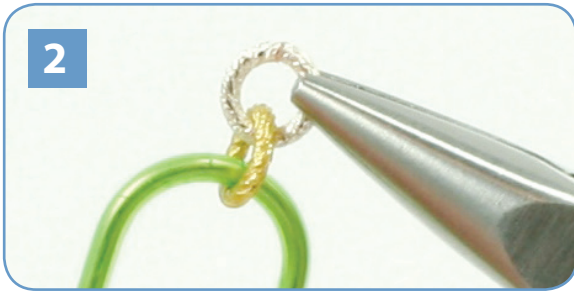


Materials

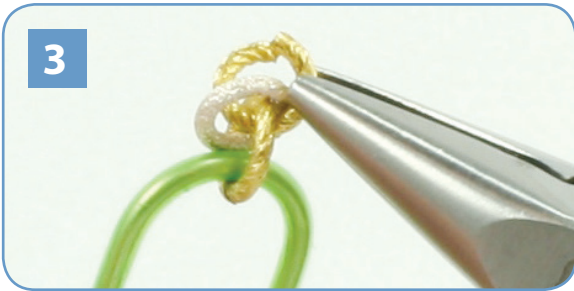
- 77 Beadalon® Artistic Wire® 18g 1/8" TR Silver Plated Weave Patterned Jump Rings A317-18S-10-04
 - 156 Beadalon® Artistic Wire® 18g 1/8" TR Brass Spiral Patterned Jump Rings A316-18-NTB-04
 - 18 Beadalon® Artistic Wire® 18g 7/32" TR Brass Spiral Patterned Jump Rings A316-18-NTB-09
 - 9 Beadalon® Gold Color Star/Ball Head Pins 312P-110
 - 1 Beadalon® Large Toggle Clasp – Gold Color 323A-007
 - 10" Beadalon® Artistic Wire® 22g Brass Wire AWD-22S-03-08YD
 - 2 Beadalon® Bead Caps
 - 9 Pink AB Glass 14mm Faceted Discs – Michael's
 - 8 6mm Pink Crystals – Michael's
 - 1 8mm Pink Crystal – Michael's
 - 1 Strand Pre-Strung Pearls - Michael's
- Tools:**
- 2 Pair Beadalon® Artistic Wire® Snub Nose Pliers by The ChainMaille Lady™
 - 1 Pair Beadalon® Designer Flush Cutters 202E-001
 - 1 Pair Beadalon® Designer Round Nose Pliers 202E-030
 - 1 Paper Clip



1. Add one 18g 1/8" brass jump ring to the paper clip.



2. Add one 18g 1/8" silver jump ring to the 18g 1/8" brass jump ring.



3. Take one open 18g 1/8" brass jump ring and scoop up the brass jump ring added in step 1 and go through the 18g 1/8" silver jump ring added in step 2. Close the jump ring. The silver and brass jump rings form a möbius.



4. Take one open 18g 1/8" brass jump ring and scoop up the möbius (the silver and brass jump rings that are intertwined). Close the jump ring.



5. Take one open 18g 1/8" silver jump ring and scoop up the brass jump ring added in step 4. Close the jump ring.



6. Take one open 18g 1/8" brass jump ring and scoop up the brass jump ring added in step 4 and go through the silver jump ring added in step 5. Close the jump ring.



7. Repeat steps 4 through 6 using all of the 18g 1/8" silver jump rings and all but eleven 18g 1/8" brass jump rings. Five 18g 1/8" brass jump rings will be used with the clasp and six will be used to attach the pearls to the rosette chain.



8. Using the star/ball head pins and the crystals make wrapped loop components. Eight 6mm crystal components and one 8mm crystal component.



9. Attach the crystal components to the pink disks using 18g 7/32" jump rings.



10. Find the center of the rosette chain and the pearls strand. With one open 18g 7/32" brass jump ring attach the center of the pearl strand to the center of the rosette chain, before closing add one pink disk component with the 8mm crystal attached to the jump ring. Close the jump ring.



11. Count 5 jump rings to the right (count the mobius as one jump ring), and with an open 18g 7/32" brass jump ring attach the pearl strand to the rosette chain, before closing add one pink disk component to the jump ring. Close the jump ring. (The picture is a view from the back of the necklace.)



12. Count 10 jump rings to the right (count the möbius as one jump ring), and with an open 18g 7/32" brass jump ring attach the pearl strand to the rosette chain, before closing add one pink disk component to the jump ring. Close the jump ring. (The picture is a view from the back of the necklace.)



13. Count 10 jump rings to the right (count the möbius as one jump ring), and with an open 18g 7/32" brass jump ring attach the pearl strand to the rosette chain, before closing add one pink disk component to the jump ring. Close the jump ring. (The picture is a view from the back of the necklace.)



14. Count 10 jump rings to the right (count the möbius as one jump ring), and with an open 18g 7/32" brass jump ring attach the pearl strand to the rosette chain, before closing add one pink disk component to the jump ring. Close the jump ring. (The picture is a view from the back of the necklace.)



15. Count 10 jump rings to the right (count the möbius as one jump ring), and with an open 18g 7/32" brass jump ring attach the pearl strand to the rosette chain. (The picture is a view from the back of the necklace.)



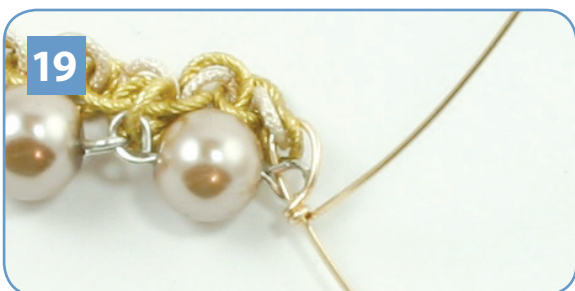
16. Repeat step 13 an additional two times. (The picture is a view from the back of the necklace.)



17. Repeat steps 12 through 16 for the other side of the necklace. (The picture is a view from the front of the necklace.)



18. Cut the piece of 22g brass wire in half. Take one half and thread it through the last link of the pearl strand and the last link of the rosette chain.



19. Bend the wire so that one side is longer than the other. Wrap the short end around the long end to secure the chains in place. Trim the short end of the wire.



20

20. Thread the bead cap onto the long side of the wire. Make a wrapped loop using the long end of the wire.

21. Repeat steps 19 and 20 for the other end of the necklace.



22

22. Attach the round end of the toggle to one of the wrapped loops protruding from a bead cap using an 18g 1/8" brass jump ring.



23

23. Attach the "T" end of the toggle to the other wrapped loop protruding from the bead cap using four 18g 1/8" brass jump rings.