

## DESIGN WORKSHOP

### CLEOPATRA NECKLACE

By: Sara Ellis



### Materials

- .46mm 49 Strand Satin Gold Stringing Wire – JW11NG-10FT
- 34 8mm Gold Color Jump Rings – 314A-008
- Gold Color Medium EZ Lobster Clasp – 315A-220
- 3 inches Gold Color Medium Curb Chain – 340A-030
- 4 Gold Color Wire Guardians – 325A-002
- 4 Gold Color #1 Crimp Beads – JFC1G-1.5G
- 2 Gold Color 3 Hole Spacer Bars – 318A-006
- 7 Gold Color Head Pins – 312A-113
- 24 Gold Color Eye Pins – 310A-113
- 24 6mm Gold Color Jump Rings – 314A-006
- 20 Gauge Copper Artistic Wire – AWS-20-BC-15YD
- 52 6mm Black Glass Beads
- 15 6mm Brown Glass Pearls
- 50 8mm Brown Glass Pearls
- 24 6mm Swarovski Smoked Topaz Bicones
- 24 12X8mm Swarovski Jet Faceted Teardrop Beads
- 
- Tools:
- Beadstrom Chain Nose Pliers – 201P-011
- Beadstrom Round Nose Pliers – 201P-014
- Designer Flush Cutter – 202E-001
- Crimper Tool – JTCRIMP1
- Conetastic – 228S-710

1. Using the instructions included with the Conetastic, created a cone with 20 Gauge Copper Artistic Wire and the smallest cone mandrel.
2. Using your fingernail or Chain Nose Pliers, spread the wires apart in the center of the cone.
3. Using the Flush Cutter, cut the cone in half. You will be using the smallest (thinnest) section of the cut cone. \*Save the larger half of the cone for other projects. They make great necklace ends or cones for tassels.\* Set aside.
4. Thread a 6mm Swarovski Smoked Topaz Bicone the small cone (skinny end down) and a Jet teardrop bead (skinny end down) onto an eye pin.
5. Using Chain Nose Pliers, bend the wire 90 degrees above the teardrop bead.
6. Using the Flush Cutter, trim the wire, leaving approximately ½" of wire remaining.
7. Grasp the end of the wire with Round Nose Pliers and roll the wire back towards the bead, creating a closed loop.
8. Using Chain Nose Pliers, open a 6mm Jump Ring and thread it through the loop on the beaded cone link at the teardrop bead end. Close the Jump Ring.



9. Using Chain Nose Pliers, open an 8mm Jump Ring and thread it through the opposite loop of the beaded cone – at the bicone end. Close the Jump Ring.

10. Repeat Steps 1-9 23 additional times, creating a total of 24 beaded cone links. Set aside.

11. Thread the top hole of a Three Hole Spacer Bar onto an eye pin. Thread a 6mm brown glass pearl onto the same eye pin.

12. Using Chain Nose Pliers, create a 90 degree bend in the wire approximately 1/8" above the pearl.

13. Using Round Nose Pliers, push the wire up and over the top barrel of the pliers. Continue pushing the wire around to form a loop with the wire.

14. Wrap the tail of the wire around the straight section of wire three or four times to secure the loop. Trim the tail with the Flush Cutter.

15. Repeat Steps 11-14 using a 6mm Black Glass Bead on the bottom hole of the Three Hole Spacer Bar.

16. Repeat Steps 11-14 using a 6mm Brown Glass Pearl bead going the opposite direction of the previous beads added.

17. Repeat Steps 11-16 to create a second beaded three hole spacer bar.

18. Using Chain Nose Pliers, link 5 8mm Jump Rings together. Before closing the last Jump Ring, thread the Jump Ring through the loop of the middle pearl on the Three Hole Spacer Bar. Close the Jump Ring.

19. Repeat Step 18 with the second Three Hole Spacer Bar.

20. Using Chain Nose Pliers, open the last 8mm Jump Ring in the section you created in Step 19 (CC15.jpg) and thread on the 3" section of Curb Chain. Close the Jump Ring.

21. Thread a 6mm brown glass pearl onto a head pin.

22. Using the same technique that you used in Steps 12-14 create a wrapped loop with the head pin.

23. Using Chain Nose Pliers, open the last link of the Curb Chain you added in Step 20. Thread on the wrapped loop you created in Step 22. Close the Jump Ring.

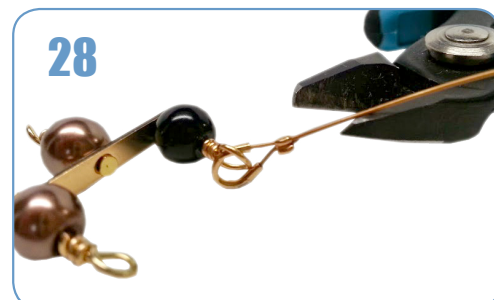
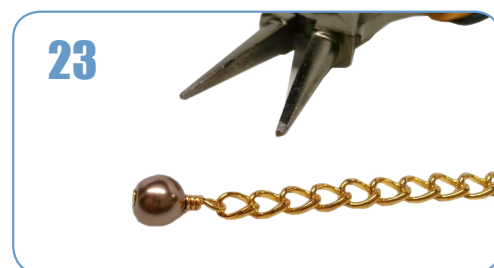
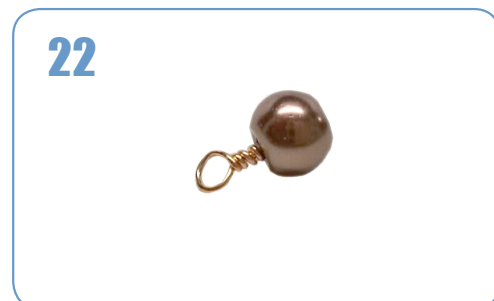
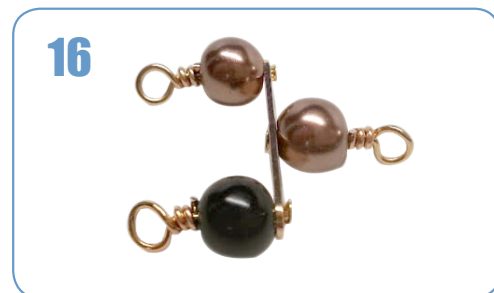
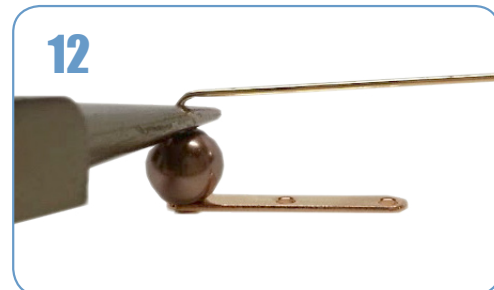
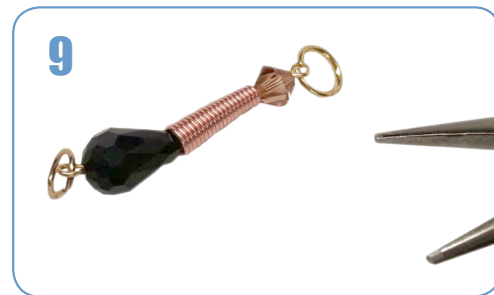
24. Using Chain Nose Pliers, attach the EZ Lobster Clasp to the last 8mm Jump Ring on the other Three Hole Spacer Bar.

25. Using one of your prepared Three Hole Spacer Bars, thread the end of the Stringing Wire through a #1 Crimp Bead, into a Wire Guardian, and back through the Crimp Bead. Be sure to catch the Wire Guardian through the loop off the Black Glass Bead on the Three Hole Spacer Bar.

26. Place the Crimp Bead into the first station of the Crimper Tool. Close the Crimper Tool over the bead.

27. Move the Crimp Bead into the second station of the Crimper Tool and close the Crimper Tool over the bead to form a "U" with the Crimp Bead.

28. Trim the tail of the Stringing Wire with the Flush Cutter.



29. Thread on two 6mm Black Glass beads onto the wire.

30. Thread on the 6mm Jump Ring end of a beaded cone link onto the wire.

31. Repeat Steps 29 & 30 until you have threaded on 50 Black Glass Pearls and 24 6mm Jump Rings of the beaded cone links. This strand should end with 2 Black Glass Beads.

32. Repeat Steps 25-28 at the end of the beaded strand to attach and finish the beaded strand to the other prepared Three Hole Spacer Bar.

33. Repeat Steps 25-28 to begin the second beaded strand using the bottom Brown Glass Pearl on the Three Hole Spacer Bar.

34. Thread on five 6mm Brown Glass Pearls.

35. Begin threading 8mm Brown Glass Pearls (x2) and the bottom 8mm Jump Rings of the beaded cone links until you have thread on 50 8mm Brown Glass Pearls and thread through all of the 24 8mm Jump Rings. (CC25.jpg) This section should end with 2 8mm Brown Glass Pearls.

36. Thread on 5 6mm Brown Glass Pearls.

37. Repeat Steps 25-28 at the end of the beaded strand to attach and finish the beaded strand to the other prepared Three Hole Spacer Bar.

38. The finished necklace should look similar to the main image on the first page.



For a Silver Color Necklace:

- \*.36mm 49 Strand Bright Stringing Wire – JW21T-0
- \*20 Gauge Tarnish Resistant Silver Artistic Wire – AWS-20S-10-25FT
- \*34 8mm Silver Tone Jump Rings – 314B-008
- \*Silver Tone Medium EZ Lobster Clasp – 315B-220
- \*3 inches Silver Tone Medium Curb Chain – 340B-030
- \*4 Silver Tone Wire Guardians – 325B-002
- \*4 Silver Tone #1 Crimp Beads – JFC1S-1.5G
- \*2 Silver Tone 2 Hole Spacer Bars – 318B-003
- \*7 Silver Tone Head Pins – 312B-113
- \*24 Silver Tone Eye Pins – 310B-113
- \*24 6mm Silver Tone Jump Rings – 314B-005