

DESIGN WORKSHOP

BLING BRAIDED WIRE BRACELET (KUMIHIMO FLAT BRAID WITH CRYSTALS)

By: Leslie Rogalski



Materials

- Beadalon Kumihimo Disk Square
- Beadalon .015 Beading Wire
- 22 g Artistic Wire
- Bead Fix Adhesive Squares
- 52-58 size 4mm Swarovski Crystals
- 2 End Cones 7/8" long with Openings Large Enough to enclose the Fold Over Crimp
- 2 Fold Over Crimp Ends with Loops
- Magnetic Clasp Set

Tools:

- Wire Snips
- Round Nose Pliers
- Flat Nose or Chain Nose Pliers
- Bead Stopper

Tips: Pay attention! It is challenging to pick up a missed stitch, and may require starting over especially as a beginner. • Keep the wires secure in their slots to prevent dropping a stitch • Keep tension taut throughout your braid.

Clamp the end coming through the center slot with a Bead Stopper to use as a handle for proper tension.

Make a braid slightly longer than your desired length. It's easier to shorten if too long rather than add length once the piece is removed from the loom.

Kumihimo Tips: Braid two sequences without adding beads to allow a flat section to pull into an end cone or use with other clasp finishing techniques. This un-beaded braid of wires will eventually be secured with the Bead Fix and trimmed to fit into your end cone.

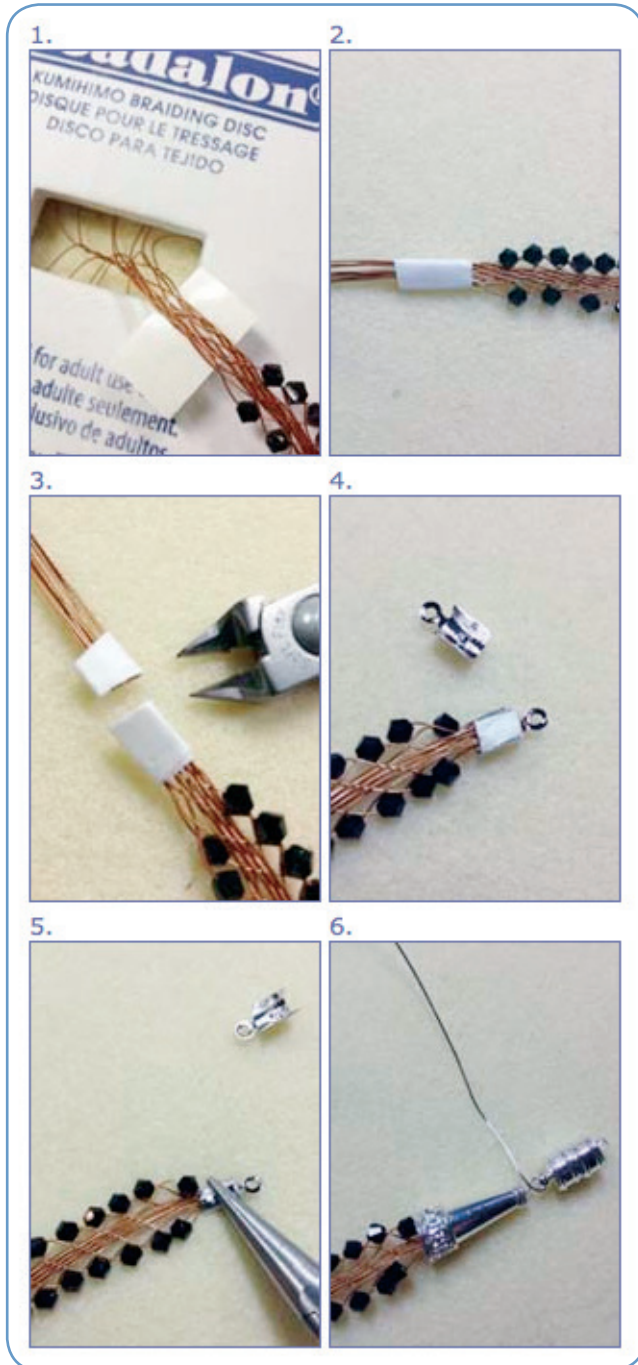
Adding Crystals or Beads Along the Outer Edges:

• Crystals are strung one by one as needed; they are not pre-strung.

• Crystals are added along both sides of the flat braid: when moving from CB to 9 on the right-hand side of the loom, and when moving from B to CB on the left-hand side of the loom. Use this chant to remember: Add a crystal moving up, add a crystal moving over. In other words, add a crystal at the end of each sequence when moving a wire up from CB to 9, and add a crystal when moving over from B to CB.

• Start the new sequence moving 4 to B, and repeat the basic braid adding crystals when moving from CB to 9 on the right-hand side of the loom, and when moving from B to CB from the left to the right side of the loom.

Finish The Ends:



When to Stop Braiding:

The total length of the bracelet braid section must leave allowance space for end cones and clasp. **Example:** for 7.5" total bracelet including 2.5" of cones and clasp, braid 2 sequences without crystals, 5" of braid with crystals, and another two sequences without crystals. Excess wire ends will be trimmed.

Finish The Ends:

- Cut a Bead Fix square in half. Remove the backing and fold the sticky side completely around the end of the braid. Press firmly. Use a flat or chain nose pliers to further flatten and secure the bond.

- Trim the ends to fit into the fold over crimp. Insert the taped end into a fold over crimp close to the crystals. Use pliers to close the crimp firmly.

- Use a 22g piece of wire to make a small simple wrapped loop through the fold over crimp loop. Feed the long wire end through an end cone. Pull the cone down to the crimp. String 1 clasp loop on the long wire protruding from the end cone.

- Make a wire wrapped loop pulling the cone snug to the braid, hiding the fold over crimp. Repeat to finish the other end of the braid.

Variation Ideas:

For a more substantial braid, use 2 wires in each slot. Remember to string crystals on BOTH wires in each stitch when using doubled wires. Make it more eye catching with a braid 8 or 10 strands wide.