

DESIGN WORKSHOP

ROSY ROWS BRACELET

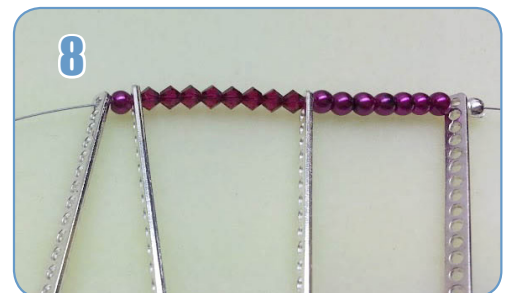
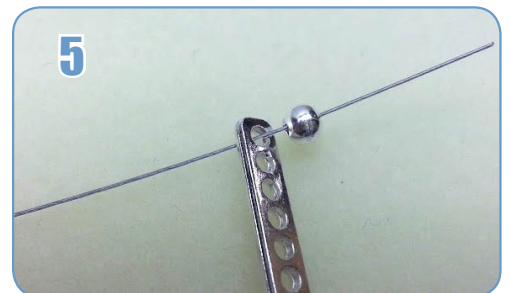
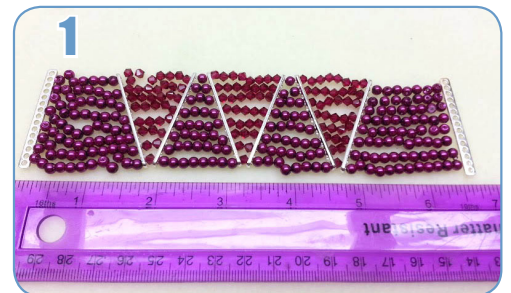
By: Sara Ellis



1. At first, it may help you to lay out your pattern to determine the length of your bracelet. Make adjustments to length by adding pearls on the ends.
2. Thread a #1 crimp bead onto one strand of stringing wire.
3. Using chain nose pliers, close the crimp bead over the wire, leaving a 1 inch tail.
4. Using the Mighty Crimper, close a crimp cover over the crimp bead. Because the crimp cover is significantly larger than the crimp bead, no further crimping is needed.
5. Thread the wire through the top hole of a 15 hole spacer bar, sliding the crimp cover all the way down next to the spacer bar.
6. Sting on 7 glass pearls and another 15 hole spacer bar.
7. String on 8 bicones and another 15 hole spacer bar.
8. String on 1 glass pearl and another 15 hole spacer bar. (Photo RR5.jpg)
9. String on 8 bicones and another 15 hole spacer bar.
10. String on 1 glass pearl and another 15 hole spacer bar.
11. String on 8 bicones and another 15 hole spacer bar.

Materials

- 8 12 inch strands of Beadalon 19 Strand Stringing Wire in Bright – JW14T-O
- 8 15 Hole Silver Tone Spacer Bars – JSKIT0295
- 16 Beadalon Silver #1 Crimp Beads – JFC15-1Z
- 16 Beadalon Silver 4mm Crimp Covers – 349B-011
- 1 Beadalon 3 Hole Slide Clasp in Silver - 355B-012
- 240 4mm glass pearls
- 108 4mm crystal bicones
-
- Tools:
- Beadalon Designer Sparkle Chain Nose Pliers – 201A-101
- Beadalon Mighty Crimper Tool – JTCRIMP3
- Beadalon Designer Sparkle Cutter – 202A-105



12. String on 7 glass pearls and the last 15 hole spacer bar.

13. Thread a #1 crimp bead onto the wire, sliding down as close to the spacer bar as possible, leaving enough room for a crimp cover. Squeeze closed with chain nose pliers.

14. Using the Might Crimper, close crimp cover over the crimp bead.

15. Using the cutter tool, snip the end of the wire so that it is flush with the hole of the crimp cover. Repeat this step on the opposite end.

16. Begin another strand of stringing wire as you did in steps 2-5, threading through the third hole (counting from the top) on the 15 hole spacer bar.

17. String on 8 glass pearls and thread through the next 15 hole spacer bar.

18. Continue stringing pearls and bicones as you did in steps 7-12, increasing the number of pearls by 1 and decreasing the number of bicones by 1 until you finish the row, leaving an empty hole between rows on the 15 hole spacer.

19. Repeat steps 13-15 to end the strand.

20. With a 12 inch strand of wire, loop the end through the first ring of the 3 hole slide clasp, threading both ends through a #1 crimp bead. Close the crimp bead over the wires using chain nose pliers, making sure that the wires lay side-by-side within the crimp bead.

21. Trim the tail of the wire as close to the crimp bead as possible using the cutter tool.

22. Using the Mighty Crimper, close a crimp cover over the crimp bead.

23. Thread the wire through the fifth hole of the first 15 hole spacer.

24. Continue stringing pearls and bicones as you did in the previous strands, increasing the number of pearls by 1 and decreasing the number of bicones by 1.

25. Repeat steps 20-22 to finish the strand, adding the other side of your 3 hole slide clasp.

26. Repeat steps 20-24, adding two more strands of pearls and bicones and securing the last two holes of your clasp.

27. Begin your final three strands as you did in steps 2-5, stringing pearls and bicones, increasing the number of pearls by 1 and decreasing the number of bicones by 1, leaving an empty hole between rows on the 15 hole spacer.

28. End these strands as you did in steps 13-15.

29. Your finished bracelet should have 8 rows threaded through every other hole on the 15 hole spacers bars (holes 1, 3, 5, 7, 9, 11, 13 and 15)

Variations:

For a Gold Bracelet-

Beadalon 19 Strand Stringing Wire in Satin Gold – JW14NG-LENGTH

8 15 Hole Gold Color Spacer Bars – JSKIT0295

16 Beadalon Gold Color #1 Crimp Beads – JFC1G-1.5G

16 Beadalon Gold 4mm Crimp Covers – 349A-011

1 Beadalon 3 Hole Slide Clasp in Gold Color – 355A-013

Choose different colors of 4mm pearls, bicones or round beads to change the entire look of your bracelet. Be creative and have fun.

